



Maine  
Philanthropy  
Center

# 2025

## Maine Philanthropy Center Conference **Sponsorship Opportunities**

May 20, 2025 | Augusta Civic Center

### **Join us and collaborate to create a vibrant, just, and equitable Maine.**

This vision of Maine requires all of us to be engaged and involved. This engagement looks like many things: serving on the MPC conference committee, volunteering or delivering content at the conference, being an exhibitor, or investing as a sponsor. We value all of these levels of involvement equally, and we want to make sure you can find your right level of engagement.

Maine Philanthropy Center is cultivating an incredible community of foundations (corporate, private, public, family, and community), nonprofits, individuals, and other philanthropic practitioners. We expect over 500 members of our community will come together on May 20, 2025 for a day of relationship building, learning, and action.

On the next page, you can find levels of sponsorship that we offer as ways to be in collaboration with the Maine Philanthropy Center for this conference. These investments will both support this event and Maine Philanthropy Center's ability to advance the effectiveness of philanthropy in Maine and its ability to make a meaningful difference.

This is one of the most unique conferences I attend and fills a void not available elsewhere: geographical specific connection bridge between funders & non-profits in an inspired & forward thinking manner.

- 2023 Conference Attendee

To secure your sponsorship or if you have questions or ideas about your level of support, reach out to Jeannette Andre at [jeannette@mainephilanthropy.org](mailto:jeannette@mainephilanthropy.org).

Thank you for being part of creating a vibrant, just, and equitable Maine.

# Support Highlights

Modeled after our friends at PEAK Grantmaking, we are trying to reimagine how we drive equity and narrow power gaps in all of our practices. This includes rethinking how we approach our fundraising efforts to support this year's conference so that they align with our values, encourage relationship-building throughout the process, and center our community and the transformation we are building together within philanthropy.

With this in mind, we are adopting a unique approach informed by Community Centric Fundraising that asks for your investment—but also for your flexibility and trust—to simply fund this important convening of sector change agents. Whether through a grant or sponsorship, supporters provide necessary funding to ensure we have what is needed to build our community and learn together.

**\$15,000**

## Keynote

Help us bring in dynamic, equity focused local and national speakers that will inspire us all into collective action.

**\$10,000**

## Engagement

Help us provide activities and spaces for wellness and connection throughout the event. This level also supports photography and empowers us to incorporate the arts and other meaningful activities into the day.

**\$7,500**

## Accessibility

Support making this conference accessible at every level. With your support we'll be able to provide services like enhanced technology, live captioning, and ASL interpretation.

**\$5,000**

## Honorarium

Reinforce our commitment to equity by making sure our committee and every presenter is appropriately acknowledged for sharing their time, expertise, and contributions to an incredible day.

**\$2,500**

## Nourishment

Support the nourishment of our community including breakfast, lunch, snacks, and refreshment breaks.

**\$1,000**

## Inclusivity

Support at this level helps provide tickets at reduced cost and free levels. Lower cost tickets make the conference accessible for small nonprofits, individual leaders, and students.

**\$750**

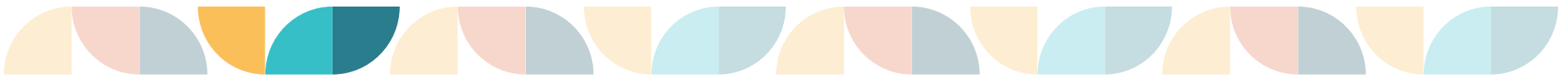
## Collective Action

At the 2023 conference, we collected over 1,200 diapers, hundreds of basic needs items, and \$820 in gift cards to donate to local nonprofits. With your support, we can do it again!

**\$750**

## Exhibitor

By being an exhibitor, you'll have a presence for the full day. Each exhibitor has an eight foot table in the exhibitor area which is located between the entrance and the main conference area—a high traffic area ideal for interacting with our audience. We hope our exhibitors will provide tools, resources, or collective action to join.



## OUR AUDIENCE & IMPACT

MPC has a far-reaching audience and will engage each of our unique 4,200+ individuals with repeated targeted messaging leading up to this conference. The conference regularly attracts over 400 people from across the nonprofit and philanthropy sectors. Every year, our audience grows, and we expect this year's in-person format to attract individuals ready to reconnect and learn together.

## ABOUT THE COLLECTIVE ACTION HALL

At MPC we believe that collaboration is a key mechanism for social change. To that end, we are inviting organizations and businesses into our conference that are seeking partnership and relationships with our member organizations and the communities they serve.

As an exhibitor in our "Collective Action" hall, you'll have the unique opportunity to showcase your business to over 500 leaders from Maine's nonprofit, philanthropy, and social impact sectors—all gathered in one place to collaborate and take action on some of the most pressing issues facing our state. This high-traffic space in the main auditorium provides maximum visibility and engagement, giving you the chance to connect directly with executive directors, board members, program officers, and changemakers who are actively seeking tools, resources, and partnerships to enhance their work. By exhibiting, you're not just showcasing your offerings; you're joining a movement of forward-thinking organizations committed to a more just, equitable Maine. Join us in creating connections that inspire lasting change!

## BY-THE-NUMBERS

### Attendees by Type



**Included in the exhibitor package** \$750 per booth

### At the event

- An 8x10 booth in our Collective Action Hall positioned in a high traffic area at the entrance to the main hall
- Recognition on signs located throughout the building and main stage slides screens.

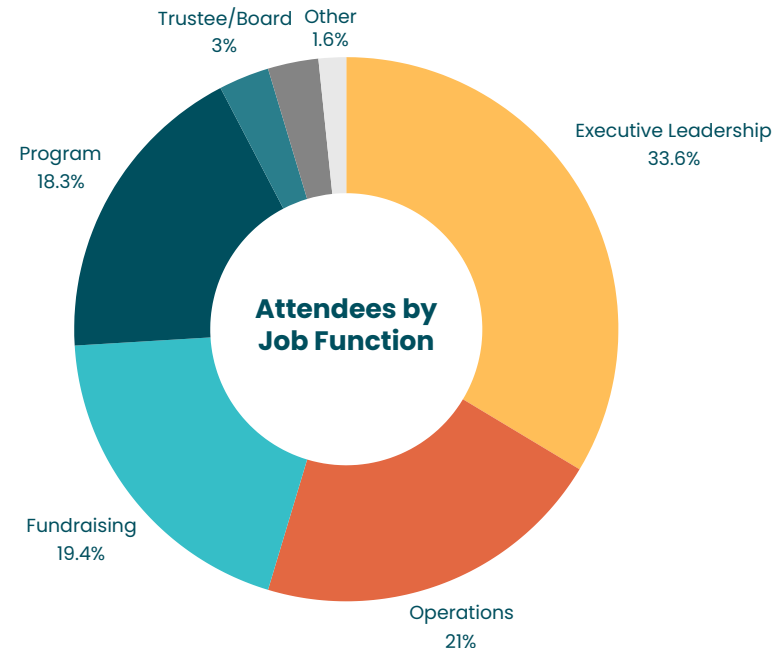
### Ongoing throughout the year:

- Acknowledgement on our website supporters page
- Opportunity to share a resource on our Resource Hub
- Acknowledgement in our all our conference communications (reach of over 4,000 individuals)

**437**  
Attendees  
in 2023

**4261**  
Leaders in our  
network

**421**  
Member  
organizations



# Levels & Benefits

We are incredibly grateful for support at any level. All supporters will be recognized equally with their logo in all conference related materials (website, emails, social media, day-of materials) and have the opportunity to include a digital ad in our attendee thank you materials. Each level also comes with tickets which can be used by the supporter or donated for community use.

Levels	#	Amount	Onsite Recognition	Website Recognition	Exhibitor Package	Share Resources	# of Tickets
<b>Keynote</b>	1	\$15,000	x	x	x	x	8
<b>Engagement</b>	2	\$10,000	x	x	x	x	6
<b>Accessibility</b>	3	\$7,500	x	x	x	x	4
<b>Honorarium</b>	4	\$5,000	x	x	x	x	2
<b>Nourishment</b>	5	\$2,500	x	x	x	x	2
<b>Inclusivity</b>	5	\$1,000	x	x	x	x	1
<b>Exhibitor</b>	15	\$750	x	x	x	x	1
<b>Collective Action</b>	10	\$750	x	x	x	x	1

**Thank you to our 2023 supporters! We are grateful for the generous contributions from our 2023 Conference Sponsors, which helped make our convening possible.**

- BerryDunn
- Betterment Fund
- Bingham Program
- Downeast Nonprofit Network
- Elmina B. Sewall Foundation
- Hannaford
- Hemenway & Barnes
- John T. Gorman Foundation
- Kennebunk Savings Bank
- Machias Savings Bank
- Maine Community Foundation
- Maine Health Access Foundation
- Nellie Mae Education Foundation
- New Balance Athletics
- Northeast Delta Dental
- Onion Foundation
- Point32Health Foundation
- Quimby Family Foundation
- Sam L. Cohen Foundation
- Southern Maine Conservation Collaborative
- TD Bank
- Unity Foundation
- Virginia Hodgkins Somers Foundation
- Wright Collective





As someone who is new to philanthropy, the networking spaces and learning opportunities offered by MPC have been some of the most valuable resources I've encountered. MPC has helped create so many new connections for me and helped me feel more oriented to this complex new sector.

- MPC Member

## ABOUT THE MAINE PHILANTHROPY CENTER

MPC is the keystone for those seeking to create transformative positive change: an organization that connects and strengthens the vital network of funders, supports and nourishes relationships with each other and community organizations, and builds the collective voice of the sector. We achieve this by partnering with over 400 nonprofit members and more than 70 of Maine's funding stakeholders. Those relationships help each individual organization achieve optimal effectiveness. Through our programs like the MPC Conference and affinity groups, funders and nonprofits explore new avenues, share best practices, and strategize together.

## OUR AUDIENCE & IMPACT

MPC has a far-reaching audience and will engage each of our unique 4,200+ individuals with repeated targeted messaging leading up to this conference. The conference regularly attracts over 400 people from across the nonprofit and philanthropy sectors. Every year, our audience grows, and we expect this year's in-person format to attract individuals ready to reconnect and learn together.

*MPC plays a critical role in the philanthropic ecosystem in Maine and in facilitating learning and collaboration among funders like it did on the Downeast tour. I hope other funders see the value in MPC's work and consider making contributions beyond annual dues to support special projects and programs that help us all to work more effectively.*

- MPC Member

MPC's equity-infused convenings help to accelerate our thinking and our practice on how to infuse equity into grantmaking.

- MPC Member

## Support MPC Beyond the Conference!

We greatly appreciate the support of our members, friends, and partners to help us host this amazing conference. This event is just one of our many ways we bring our community together to connect, build relationships, and transform philanthropy in Maine.

We encourage you to consider supporting MPC beyond just our convening or your membership.

Here are a few options:

- Consider increasing your annual membership contribution to be recognized as an exceptional supporter.
- Give an in-kind donation as the host for a gathering, or sponsor another event in 2025—like when we brought Marcus Walton from GEO to Maine with the support of the Elmina B. Sewall Foundation.
- And, of course, we always welcome and accept general operating support grants.

Reach out to Jeannette Andre at [jeannette@mainephilanthropy.org](mailto:jeannette@mainephilanthropy.org) for details and to explore what option is best for you and your organization.



Maine  
Philanthropy  
Center